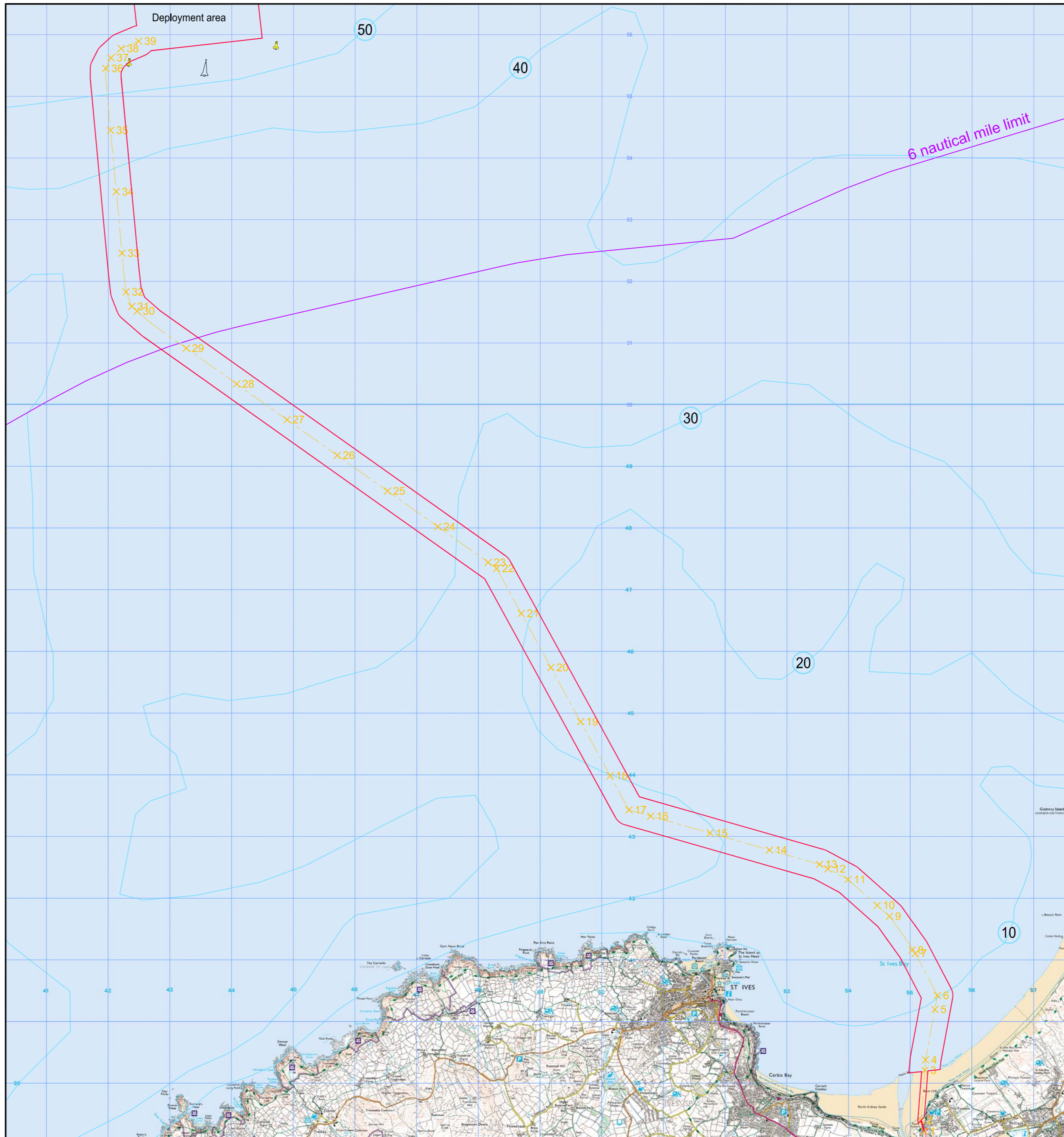
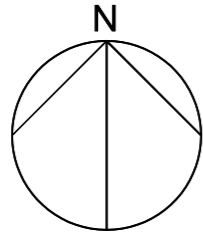


	OS N	OS E	WGS84 N		WGS84 E	
1	38222	155232	50° 11' 34"	5° 25' 47"		
2	38399	155178	50° 11' 39"	5° 25' 50"		
3	39211	155241	50° 12' 6"	5° 25' 49"		
4	39380	155252	50° 12' 11"	5° 25' 49"		
5	40197	155403	50° 12' 38"	5° 25' 43"		
6	40423	155445	50° 12' 45"	5° 25' 42"		
7	41105	155087	50° 13' 7"	5° 26' 1"		
8	41158	155034	50° 13' 8"	5° 26' 4"		
9	41708	154668	50° 13' 26"	5° 26' 24"		
10	41884	154470	50° 13' 31"	5° 26' 34"		
11	42303	153997	50° 13' 44"	5° 26' 59"		
12	42476	153672	50° 13' 49"	5° 27' 16"		
13	42549	153535	50° 13' 51"	5° 27' 23"		
14	42781	152723	50° 13' 57"	5° 28' 4"		
15	43056	151761	50° 14' 5"	5° 28' 53"		
16	43330	150799	50° 14' 12"	5° 29' 42"		
17	43432	150445	50° 14' 15"	5° 30' 1"		
18	43985	150142	50° 14' 32"	5° 30' 17"		
19	44862	149661	50° 15' 0"	5° 30' 43"		
20	45739	149181	50° 15' 28"	5° 31' 10"		
21	46617	148701	50° 15' 55"	5° 31' 36"		
22	47347	148301	50° 16' 18"	5° 31' 58"		
23	47444	148164	50° 16' 21"	5° 32' 5"		
24	48022	147349	50° 16' 39"	5° 32' 48"		
25	48601	146533	50° 16' 56"	5° 33' 30"		
26	49180	145718	50° 17' 13"	5° 34' 13"		
27	49759	144902	50° 17' 31"	5° 34' 55"		
28	50337	144086	50° 17' 48"	5° 35' 38"		
29	50916	143271	50° 18' 6"	5° 36' 20"		
30	51519	142474	50° 18' 24"	5° 37' 2"		
31	51594	142387	50° 18' 26"	5° 37' 7"		
32	51830	142294	50° 18' 34"	5° 37' 12"		
33	52458	142229	50° 18' 54"	5° 37' 17"		
34	53454	142136	50° 19' 26"	5° 37' 24"		
35	54449	142044	50° 19' 58"	5° 37' 31"		
36	55453	141965	50° 20' 30"	5° 37' 37"		
37	55624	142051	50° 20' 36"	5° 37' 33"		
38	55775	142215	50° 20' 41"	5° 37' 25"		
39	55895	142499	50° 20' 45"	5° 37' 11"		



Legend

- Wave Hub development site boundary
- Depth Contours - based on BGS data (m).
- 6 nautical mile limit
- Surveyed Wave Hub cable corridor - centre line
- Cardinal buoys (black and yellow)
- Special mark buoys (yellow)

This product has been derived in part from material obtained from the UK Hydrographic Office with the permission of the Controller of Her Majesty's Stationery Office and UK Hydrographic Office. (www.ukho.gov.uk)
 ©British Crown and SeaZone Solutions Ltd, 2004. All rights reserved. Data License No. 082004.005. NOT TO BE USED FOR NAVIGATION.

This map is reproduced from Ordnance Survey © material by Halcrow on behalf of South West RDA with the permission of the Controller of Her Majesty's Stationery Office, © Crown copyright. Unauthorised reproduction infringes Crown copyright and may lead to prosecution or civil proceedings. Licence Number: 100020449

Key Plan:

Notes:

Rev	By	Chkd	Apprv	Date	Description



Halcrow Group Limited
 Ash House, Falcon Road, Sowton, Exeter, EX2 7LB
 Tel: (01392) 444252 Fax: (01392) 444301
 E:evan@halcrow.com
 www.halcrow.com



Project: **WAVE HUB DESIGN & DEVELOPMENT**

Drawing: **WAVE HUB EXPORT CABLE CORRIDOR DEVELOPMENT BOUNDARY**

Drawn by: DRJP Date: 13/06/2006

Checked by: JB Date: 13/06/2006

Approved by: AET Date: 16/06/2006

Drawing No. **WGEHDD/016** Revision: -

Drawing Scale: 1:50,000 at A2

FOR APPROVAL